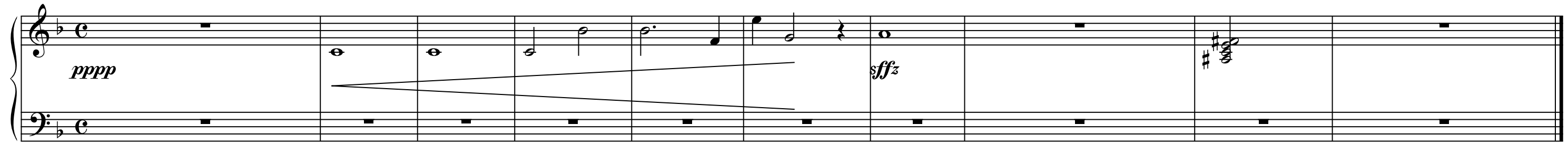


] MA [

THINGAMAJIGS PERFORMANCE GROUP
DANDELION DANCETHEATER

An optional figure for use throughout:



JO

HA

KYŪ

DISCOVER CHORD

Sound the room.
Build pressure.

pppp to mf

[FEEL 7, SHOW 3]

4'33"

Cone
Tableau

DIRECTED BY
DANDELION

Look,
listen, or
soundlessly
intone.

MEMORY CHORD

Pick one
note from
the Discover
Chord.

Accelerate.
mf to fff

30



INHALE

THE CHORD

Then sweep it
to two major
seconds separated
by a tri-tone

fff

[FEEL 10, SHOW 7]

15

UNISON

Exhale.

Release.

Resolve to the
unison E.

5

IN GENERAL

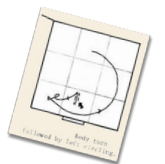
- Use extreme dynamics to create four monumental walls of sound that serve both as forms of silence, and as brackets for the primary performance of silence.
- Follow a jo-ha-kyū structure in the largest and smallest sense, using tempo, timbre and dynamics.
- Use the songline at will.

INSTRUMENTATION

- Voice
- Flutes
- Reeds
- Glass
- Turntables
- Guitars
- Bass
- Electronics

MOVEMENT

- In a single, 50-minute transit, flock once from the loading dock door of Gallery B, through the musicians (or audience), down the ramp exit.



IMAGE

- Film Collage #1: Jo (30 minutes)
- Silence Film (4 minutes 33 seconds)
- Film Collage #2 Ha (15 minutes)
- Film Collage #3 Kyū (5 minutes)