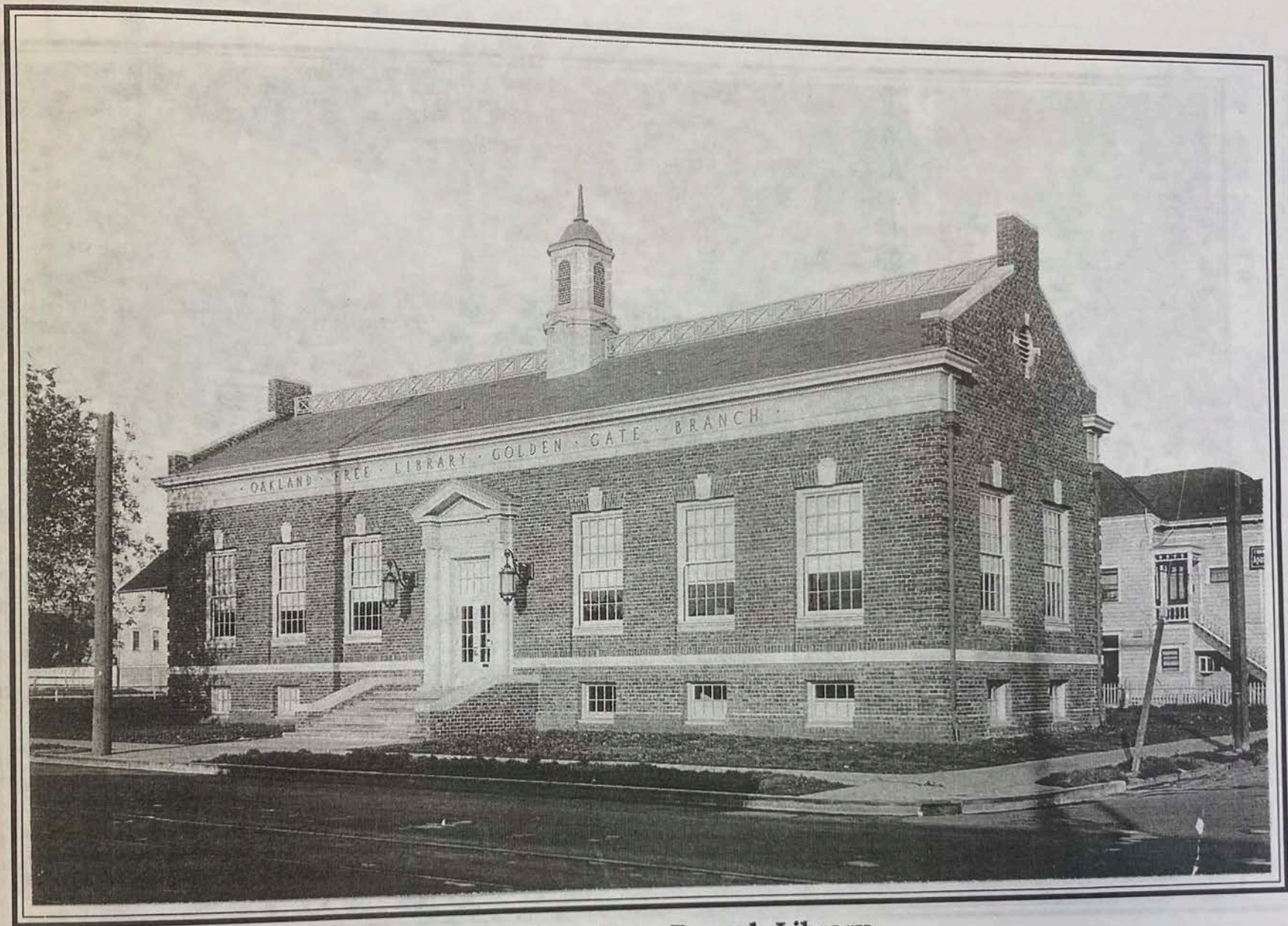




**Golden Gate Branch Library**

Located at 5606 San Pablo Avenue, this library was funded by Andrew Carnegie and built in 1918 for \$35,000. The architect was Charles Dickey who also designed the Claremont High. The architectural style is Georgian Colonial Revival. The building is one-story and basement. It has a gable roof, cupola, monumental entry, and wood sash windows. Courtesy: OHR. Photo: 1918.

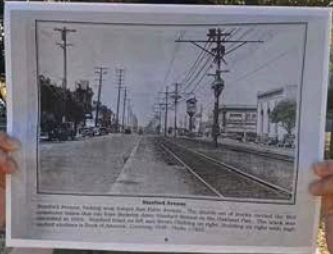




### **Golden Gate Branch Library**

Located at 5606 San Pablo Avenue, this library was funded by Andrew Carnegie and built in 1918 for \$35,000. The architect was Charles Dickey who also designed the Claremont Hotel. The architectural style is Georgian Colonial Revival. The building is one-story and basement. It has a gable roof, cupola, monumental entry, and wood sash windows. Courtesy, OHR. Photo, c1918.









### **Stanford Avenue**

Stanford Avenue, looking west toward San Pablo Avenue. The double set of tracks carried the Red commuter trains that ran from Berkeley down Stanford Avenue to the Oakland Pier. The track was electrified in 1910. Stanford Hotel on left and Strom Clothing on right. Building on right with high arched windows is Bank of America. Courtesy, OHR. Photo, c1925.





**Eastern City Cafe**

The Eastern City Cafe at 5849 San Pablo Avenue has been at this location since the 1970s. The building originally had a Greek urn on each side of the distinctive raised parapet. These urns have disappeared, perhaps destroyed by the Loma Prieta earthquake. In the 1960s this building was occupied by the Parker Clothing Shop. Courtesy, EHS. Photo, 1989.





### **Eastern City Cafe**

The Eastern City Cafe at 5849 San Pablo Avenue has been at this location since the 1970s. The building originally had a Greek urn on each side of the distinctive raised parapet. These urns have disappeared, perhaps destroyed by the Loma Prieta earthquake. In the 1960s this building was occupied by the Parker Clothing Shop. Courtesy, EHS. Photo, 1989.



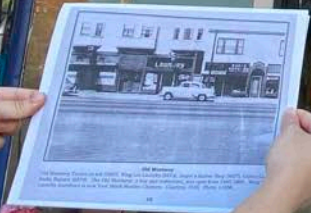


PORTIA'S  
WING LEE  
CLEANERS

BAY

LAUNDRY  
DRY CLEAN CLEAN

PORTIA'S  
WING LEE LAUNDRY 5877



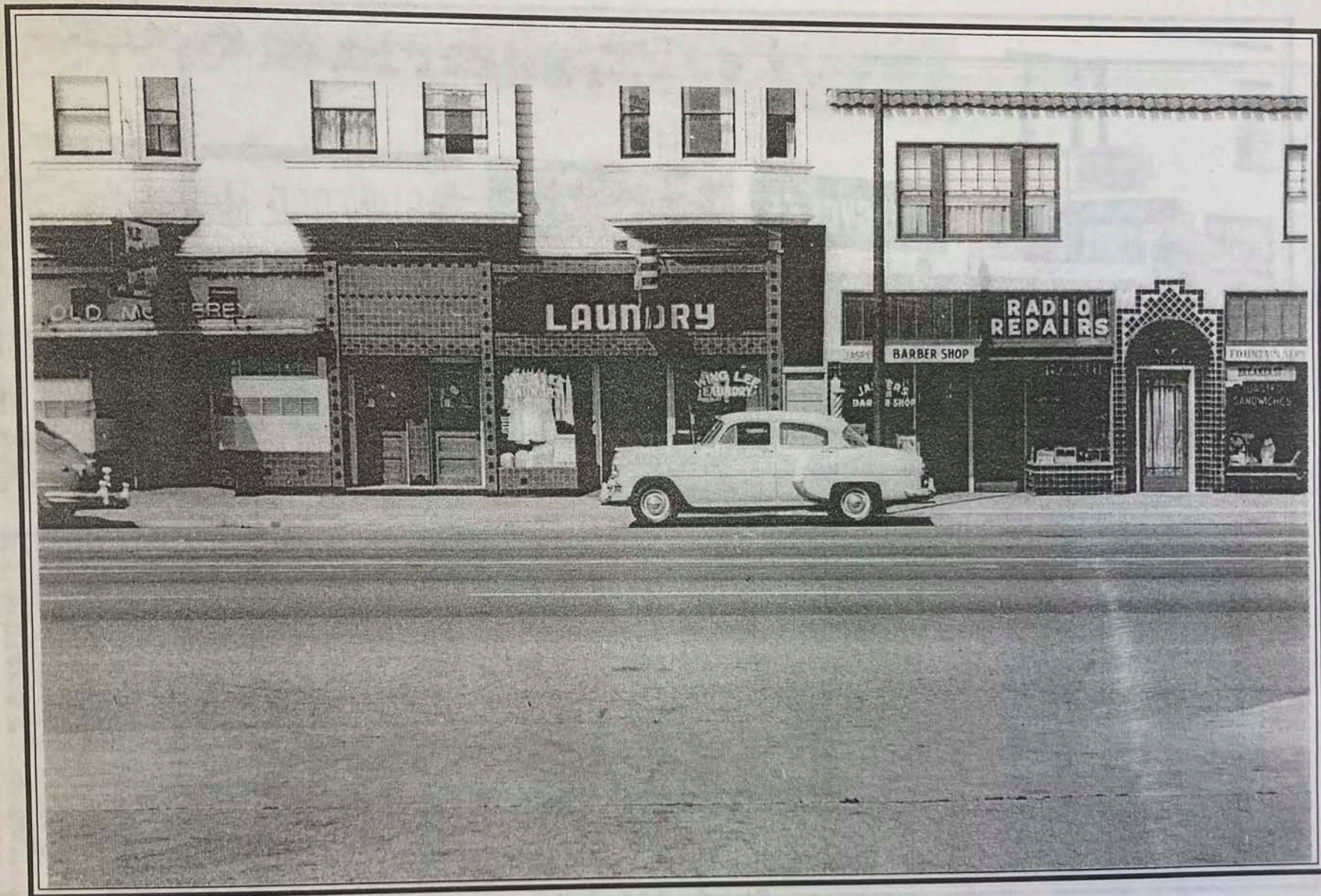
SHIRT  
LAUNDRY

DRY  
CLEANING

KIOYK

WOOD





### Old Monterey

Old Monterey Tavern on left (5867), Wing Lee Laundry (5873), Jasper's Barber Shop (5877), Golden Gate Radio Repairs (5879). The Old Monterey, a bar and restaurant, was open from 1945-1966. Wing Lee Laundry storefront is now Your Black Muslim Cleaners. Courtesy, OHR. Photo, c1956.



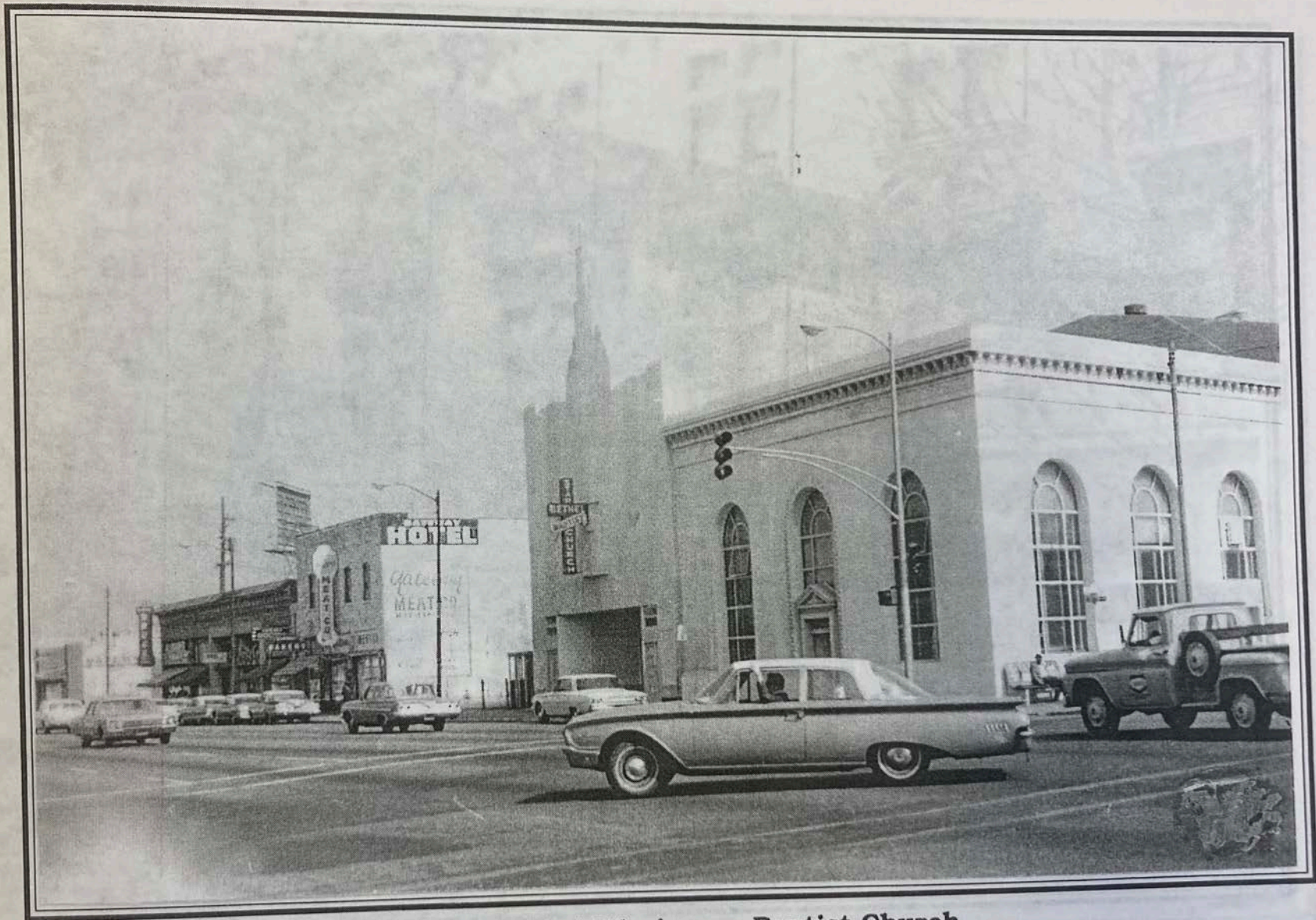
STAR BETHEL  
MISSIONARY  
BAPTIST CHURCH



**Star Bethel Missionary Baptist Church**

Northeast corner of San Pablo and Stanford Avenues. In the 1950s the building on the corner was the Gateway Theater (5812). The Star Bethel Missionary Baptist Church purchased both buildings, removed the marquee from the theater, and extensively modified. Gateway Hotel, Gateway Meat Co., and Klinkner Drugs on left. Courtesy, Strategic Planning. Photo, c1960.





### **Star Bethel Missionary Baptist Church**

Northeast corner of San Pablo and Stanford Avenues. In the 1950s the building on the corner was Bank of America (5800) open 1922-1956. Next door was Gateway Theater (5812). The Star Bethel Missionary Baptist Church purchased both buildings, removed the marquee from the theater, and combined them into a church. The exterior has been extensively modified. Gateway Hotel, Gateway Meat Co., and Klinkner Drugs on left. Courtesy, Strategic Planning. Photo, c1969.

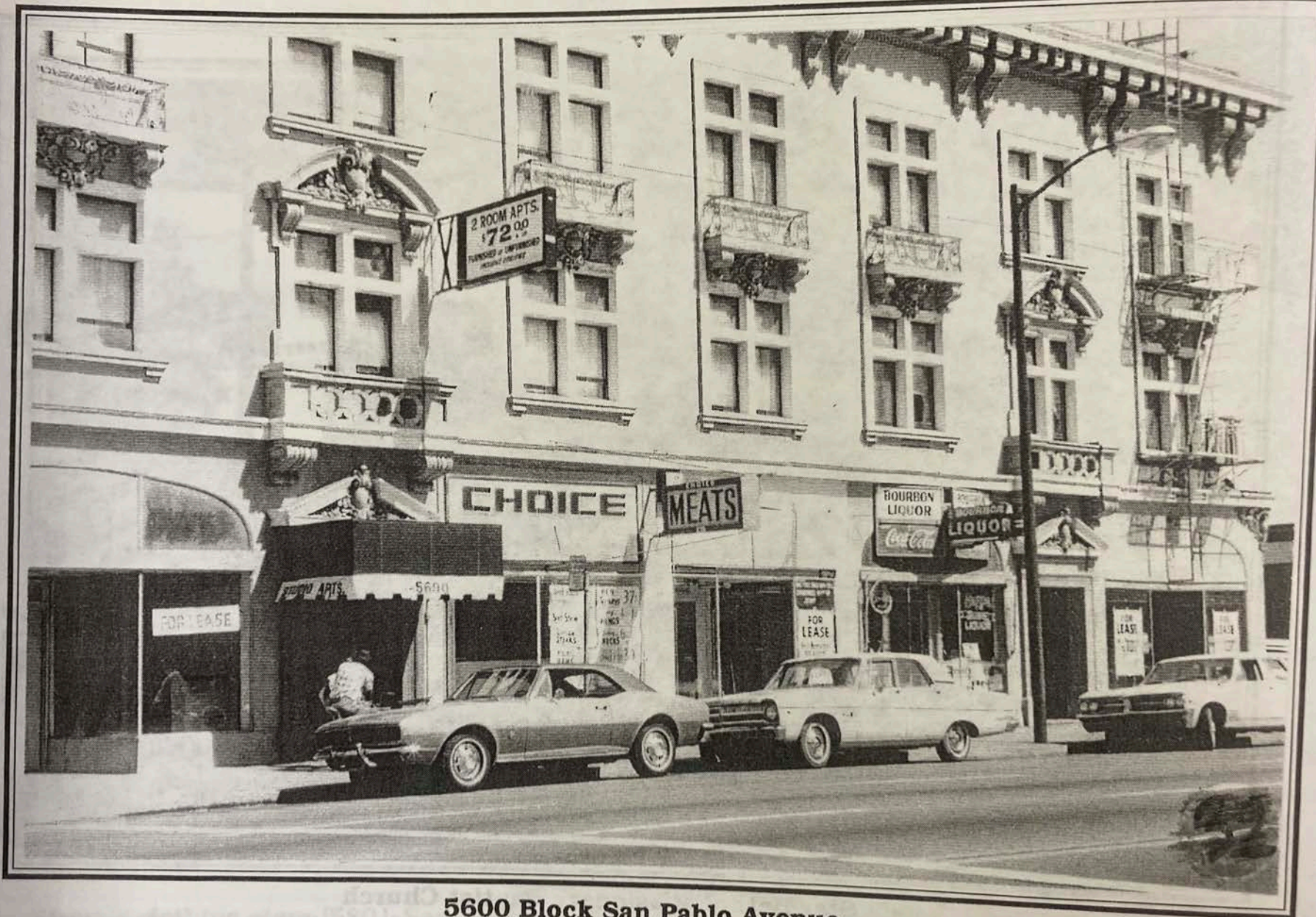




**5600 Block San Pablo Avenue**

This three-story building opened as the Golden Gate Hotel (5690) in the 1920s and later functioned as an apartment. An awning covers the entrance on left. The building has been modernized, possibly in the 1970s, and the dentils and brackets on roof line and balconies have been removed. Choice Meat Market (5688) and Bourbon Liquor occupied the first floor in the 1960s. Courtesy, Strategic Planning. Photo, 1960s





### **5600 Block San Pablo Avenue**

This three-story building opened as the Golden Gate Hotel (5690) in the 1920s and later functioned as an apartment. An awning covers the entrance on left. The building has been modernized, possibly in the 1970s, and the dentils and brackets on roof line and balconies have been removed. Choice Meat Market (5688) and Bourbon Liquor occupied the first floor in the 1960s. Courtesy, Strategic Planning. Photo, 1960s.

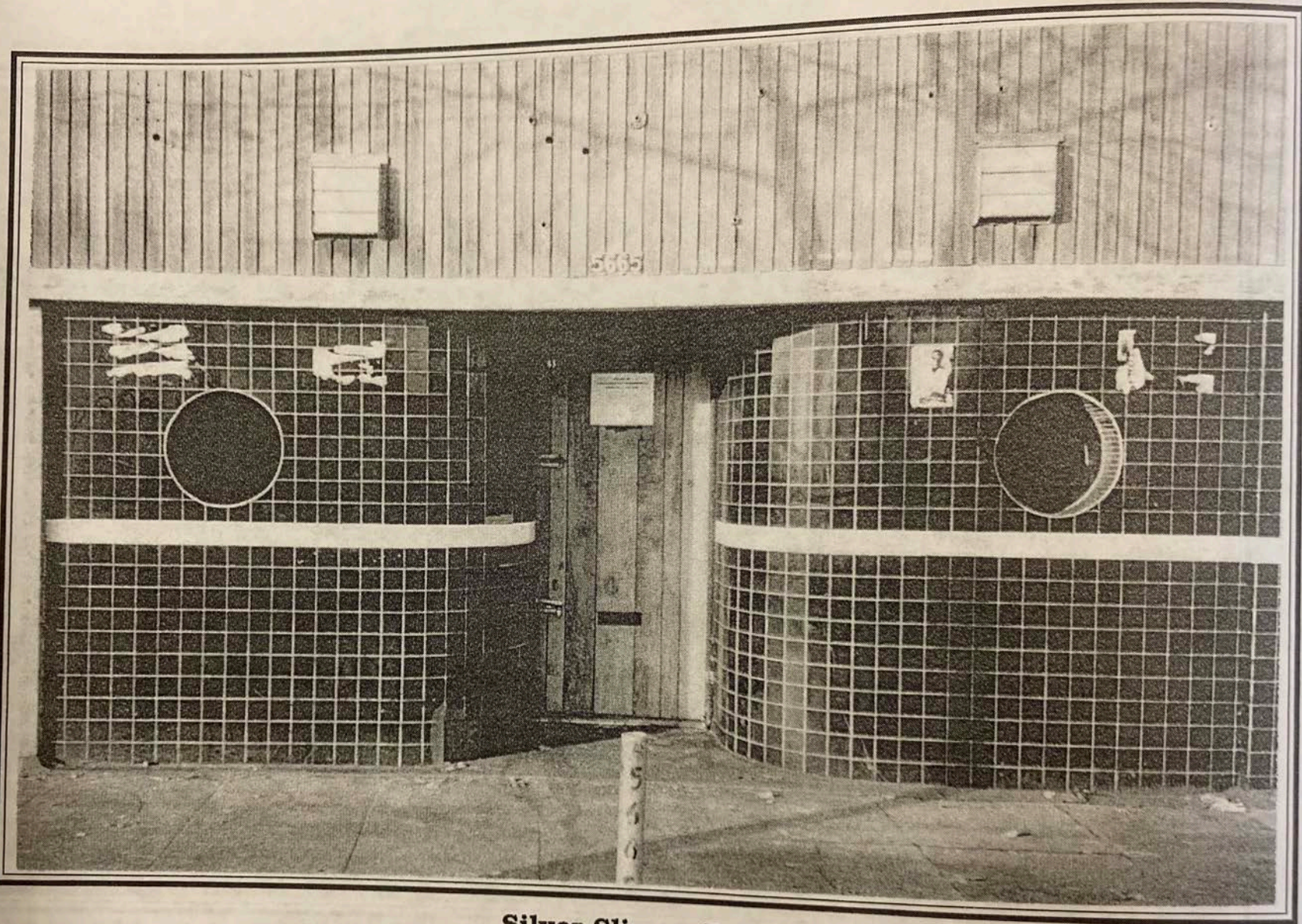




**Silver Skipper Bar**

The Silver Skipper bar had a distinctive steel door to the facade with a pair of windows on each side of the entrance. The bar, supported by a polished steel frame, was constructed of steel bars, wire, and lead piping. The Silver Skipper (SOS) opened in 1967 and closed in 1977, the latter date was given before being demolished in 1998. Courtesy: 330s Photo, 1997.





### **Silver Slipper Bar**

The Silver Slipper bar had a distinctive art deco black tile facade with a port hole window on each side of the entrance. This was a full bar, equipped with a jukebox, pool table, and shuffleboard, that served beer, wine, and hard liquor. The Silver Slipper (5665) opened 1940 and closed 1973, remaining vacant for years before being demolished in 1990. Courtesy, EHS. Photo, 1989.